

## Panel Mount Keyboard with touchpad



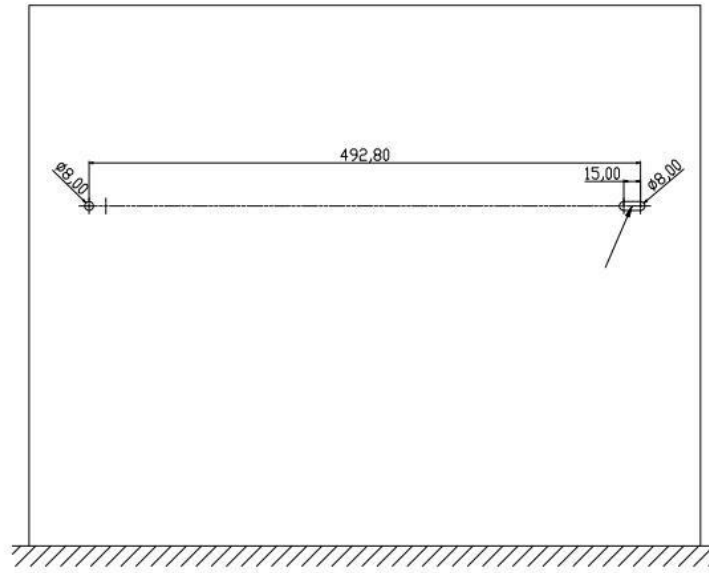
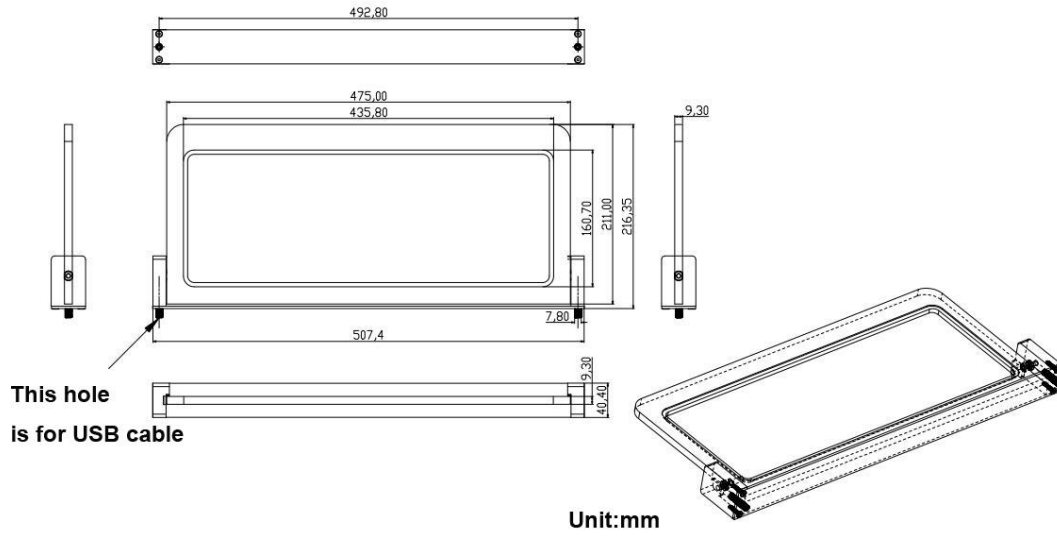
### Features:

- Completely sealed glass surface
- Can be washed and disinfected, complies with high hygiene standards
- Compact key layout with integrated touch-pad, Key sound and vibration
- Hidden cable, wall mount support
- Integrated key lock function to avoid unintended inputs while cleaning
- IP65 protection rating (front)
- Sealed keyboard in swivel-mounted aluminium alloy chassis to be mounted on vertical surfaces
- Integrated rotation damper to the working position
- Move degree: Stand up at 95 degrees and down at 5 degrees
- Integrated USB-Hub, integrated DVD-Burner available on request

### Specification:

- Number of keys: 108 (incl. 12 function keys)
- Technology: Capacitive keys
- Components: Main PCB with superimposed controller PCB
- Protection rating: IP65 (front)
- Mounting type: Panel mount keyboard attached with glue (adhesive)
- Material: Front panel made of hardened glass +Aluminum chassis
- Glass thickness: 1.1 mm
- Interface: USB
- Power: 20mA@5VDC
- Dimensions (LWH):507\*216\*40mm Keyboard size(LW):436.5\*160.8mm
- Temperature: 0°C to +60°C
- Certifications: CE, FCC Class15, Part B,RoHS
- Operating systems: Windows®, MacOSX®, Linux®

# Drawing dimension of installation:



Wall Front View